

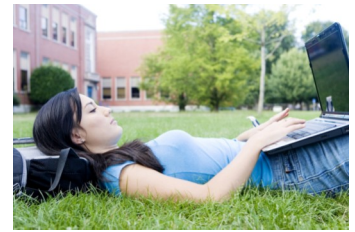


Project La Cena

www.projectlacena.com

Volume 1, Issue 4 July 2009

By: **Stephanie A. Lozano**



If you are interested in the Project Manager coming to speak with you or your students about the benefits of Project La Cena, please contact using the information below:

With questions or comments contact:

Stephanie A. Lozano
Project Manager
1201 Kitty Hawk
Library, RM 123 A
Universal City, TX
78148

Phone: 210-486-5381
Fax: 210-486-5382
E-mail:
slozano62@mail.accd.edu
www.projectlacena.com
Project La Cena is available on MySpace, Facebook, and Twitter.

Fall 2009–Spring 2010 SADA Membership

Project La Cena is proud to announce that 17 students will be provided with free memberships to the San Antonio Dietetic Association. Those students from the Alamo Colleges (AC) include: Julius Reynolds, Carly Allen, Tabitha Schwarz, Julian Carter, Jeanne Wood, Ede Chaffen, Esau Sanchez, Wayne Naumann, and Arlene Halibian. Students from the University of the Incarnate Word (UIW) include: Eugenia Pineda, Kerri Mulligan, and Jacqueline Salame. Recipients



from Texas State University include: Estefana Rodriguez, Rebecca Kenefic, Danielle Tworek, Pricilla Rubio, and Maria Pena. These students will enjoy the benefits of networking with other dietetic professionals in the San Antonio area, access to local dietetic information, additional scholarship opportunities, and student leadership opportunities.

The final due date for this opportunity is **July 31st at 5pm** for AC, UIW, or Texas State Nutrition students.

Fall 2009–Spring 2010 Mentors

Mentors from UIW, including Kerri Mulligan, Eugenia Pineda, and Jacqueline Salame, in addition to mentors from Texas State, including Estefana Rodriguez, Ashlee Thomasson, Jessica Luecke, Rebecca Kenefic, Danielle Tworek, Pricilla Rubio, and Maria Pena, will provide guidance and support

to the Project La Cena students. These mentors will also attend Project La Cena events, and assist the Project Manager with various recruitment activities, such as visiting high schools in the San Antonio area.